

Built Environment Sector Guide



NATURAL
CAPITAL
COALITION

www.naturalcapitalcoalition.org



@NatCapCoalition

The Natural Capital Coalition

The Coalition is a collaboration representing all parts of society.
Represent c.250 organizations, all working on natural capital.



Purpose

To mainstream the inclusion of natural capital in decision making, harmonizing approaches and getting them to scale, quickly.

Our Vision

A world that conserves and enhances natural capital

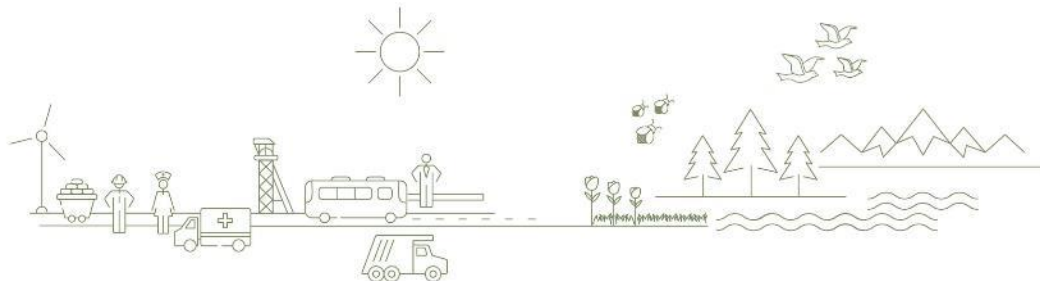
*The Coalition
is hosted by
ICAEW*



The Natural Capital Protocol



The **Natural Capital Protocol** is a **standardized framework** for **business** to **identify, measure and value** its direct and indirect **impacts and dependencies** on **natural capital**



The sector guides and supplements



Food & Beverage



Apparel



Built Environment



Forest products



Finance



Oceans



Biodiversity

Sector Guides

Supplements

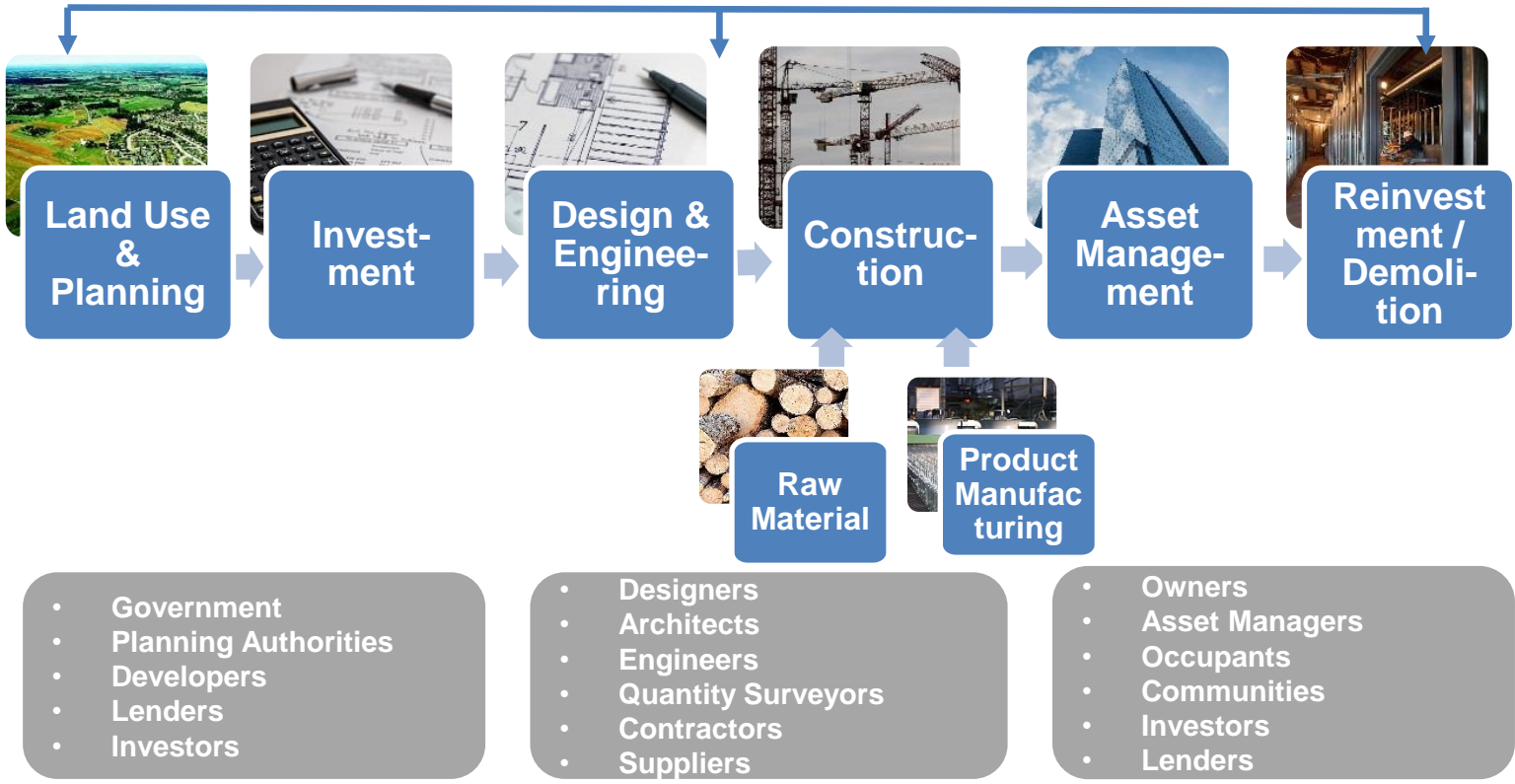


The Coalition will develop new guides in partnership with sector initiatives and associations



VISION: To enable built environment practitioners to integrate natural capital into their decision making processes

Embedding Natural Capital in the Built Environment Value Chain



- Government
- Planning Authorities
- Developers
- Lenders
- Investors

- Designers
- Architects
- Engineers
- Quantity Surveyors
- Contractors
- Suppliers

- Owners
- Asset Managers
- Occupants
- Communities
- Investors
- Lenders

Decision Makers



Why is natural capital important in the built environment?



- 40% of greenhouse gases
- 13% of the world's potable water
- Air pollution
- Human health & wellbeing
- Raw materials
- Environment currently not wholly accounted for in built environment decision making

Sector Guide project timeline





Built Environment Sector Guide: Get involved

Lead

Active involvement in ideation, identifying funding sources and taking a leading role on content development

Advise

Contribution from businesses, finance, academia, NGOs of content, and to actively advise on scope, position and strategy

Pilot test & consult

Broader community invited to contribute through piloting the draft sector guide and public consultation

Apply & share

Organisations applying the Protocol sector guide once complete and raise awareness amongst other organisations

Stay informed

Network of those who want to remain up to date with developments



For More Information

Marta Santamaria

Technical Manager, Natural Capital Coalition

+44 (0) 7468438142 | marta.santamaria@naturalcapitalcoalition.org

Mark Gough

Executive Director, Natural Capital Coalition

+44 (0)7876 035947 | mark.gough@naturalcapitalcoalition.org

Lizzie Rendell

Environmental Advisor, Skanska

+44(0)7823 355897 | lizzie.rendell@skanska.co.uk

