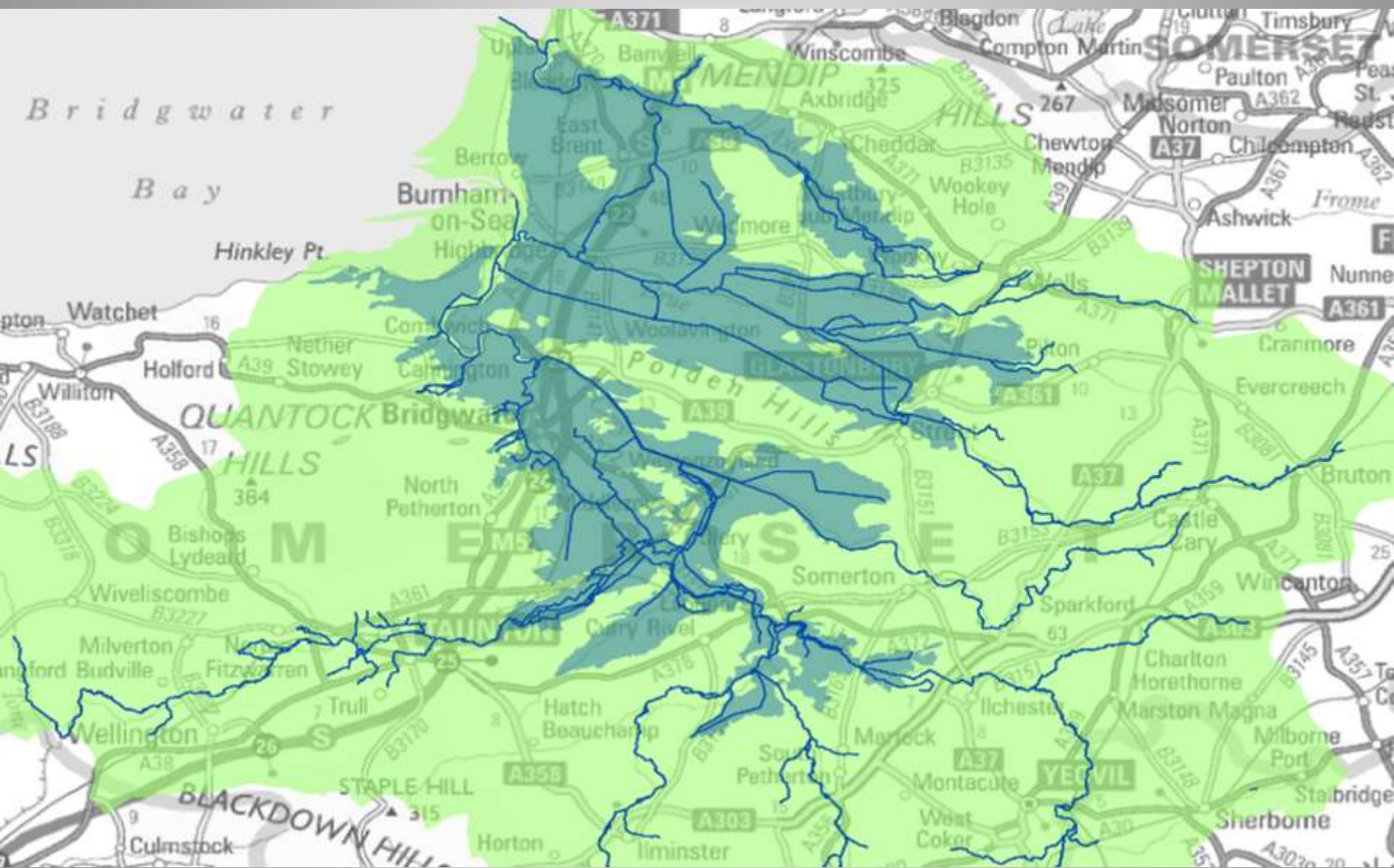


Somerset Levels and Moors Flood Action Plan

Ben Thorne, FWAG SouthWest





Somerset Levels and Moors Flood Action Plan

Background

- End January 2014 Owen Paterson visit during floods
- Challenge: Somerset, with Defra, to deliver 20 year Action Plan in 6 weeks
- Plan submitted 6th March to House of Commons library
- Now in implementation phase

Somerset Levels and Moors Flood Action Plan

Work streams and Lead Organisations

- Dredging and river management - EA
- Land management - FWAG
- Urban run-off – District Councils
- Resilient Highway Infrastructure – County Council
- Building local resilience – District Councils
- Business Case and major infrastructure schemes - EA
- Somerset Rivers Board – County Council/IDB

Land Management

Project Scope:

- Integrated advice and support package on land management across whole catchment
 - Upper/Mid - Slow flow, reduce run-off, delay and storage
 - Lower - adaptation
- Capital grants for run-off attenuation and water management
- Broaden economic base of the floodplain
- Develop Community Land Trust
- Maximise opportunities under NELMS
- Review HLS Agreements
- Streamline approvals process for work on minor watercourses
- Defra to secure flood risk benefits from CAP funding

Land Management

Drivers for change:

- Social responsibility – community pressure
- Productivity – eg. Soil loss, yields
- Regulation
- Market forces
- Advice and support
- Peer pressure
- Evidence base – science
- Incentives

Land Management

Influencing change

- Opportunistic
- Continuity of advice and support – follow-up
- Target with ‘transparent’ evidence base
- Empowerment – farmer-led
- Reduce ‘red-tape’
- Grants with low administrative burden
- Understand farm business priorities and economics
- Connect farmers in upper catchment with those lower down