

Dyfodol y Cambria - Planning for Change?

Steve Evison

Resources for Change

on behalf of
CCW and Sciencewise

www.r4c.org.uk



Cyngor Cefn Gwlad Cymru
Countryside Council for Wales

Dyfodol y Cambria - Planning for Change?

First Phase – local stakeholders and EGS

Value

What's changing? – EGS and relationships with them

Spending our taxes

Second Phase – local and national stakeholders

Implications for land use planning

Do Polyscape mapping tools help?

Lessons for policy, management and engagement

www.r4c.org.uk





0 5km Catchment boundary

Reproduced using Ordnance Survey information with permission of The Controller of Her Majesty's Stationery Office, Crown Copyright. LUC licence no

www.r4c.org.uk



Cyngor Cefn Gwlad Cymru
Countryside Council for Wales

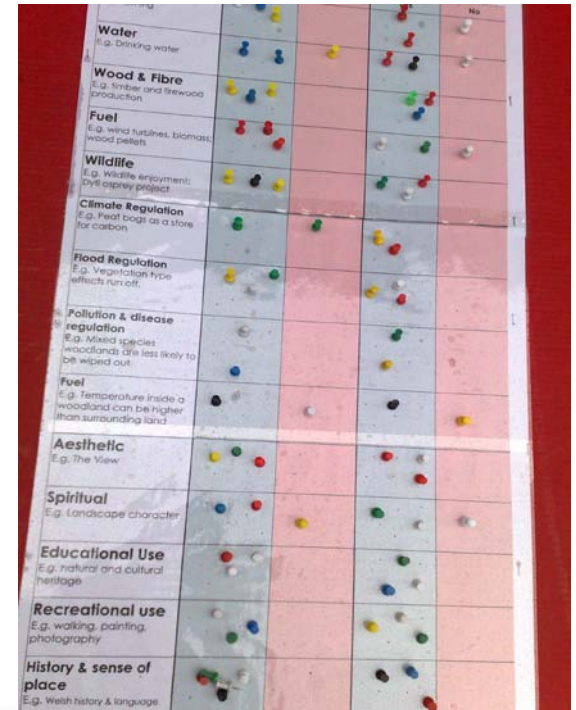
First Phase – 3 Workshops and street stalls

Three local resident workshops

- Ecodyfi
- Menter a Busnes
- Pentir Pumlumon

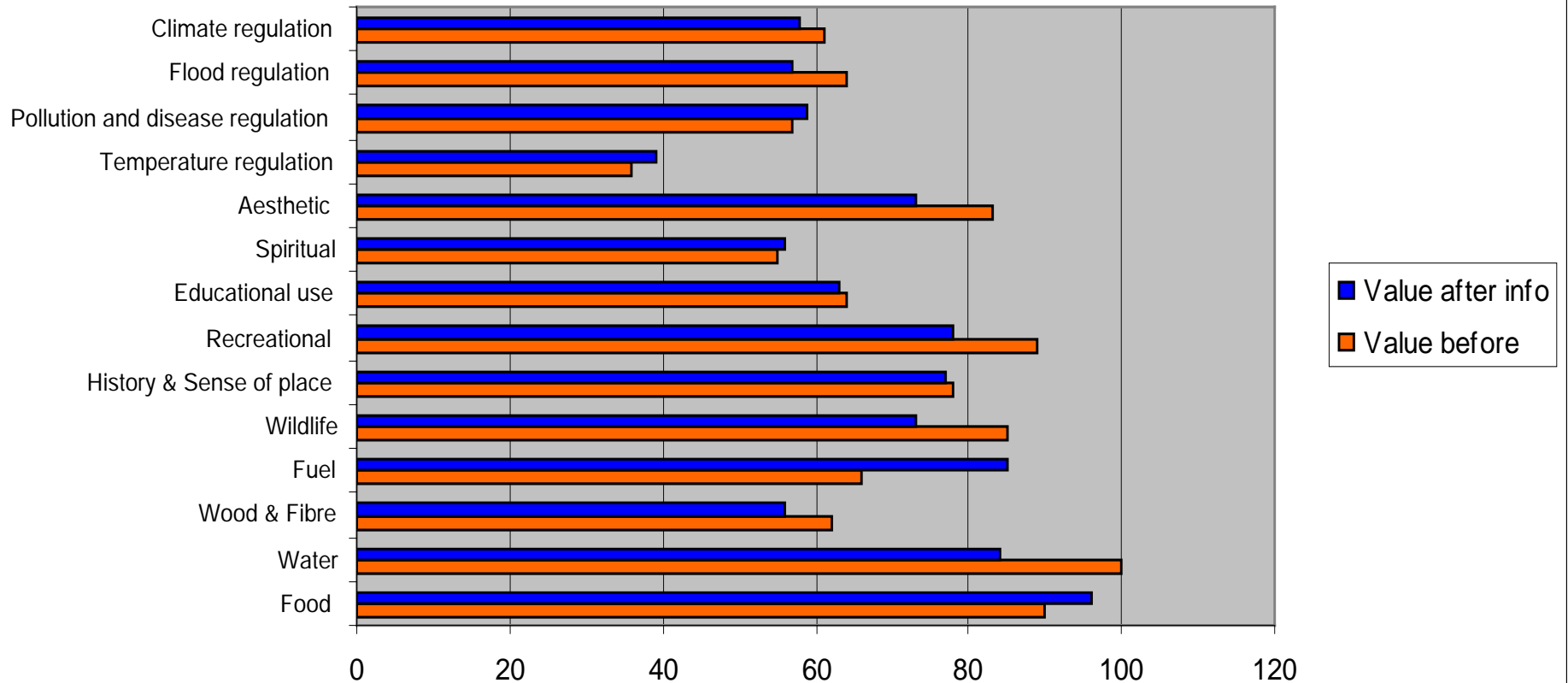
Street stalls (Aberystwyth)

- North Parade
- Co-op
- Morrisons



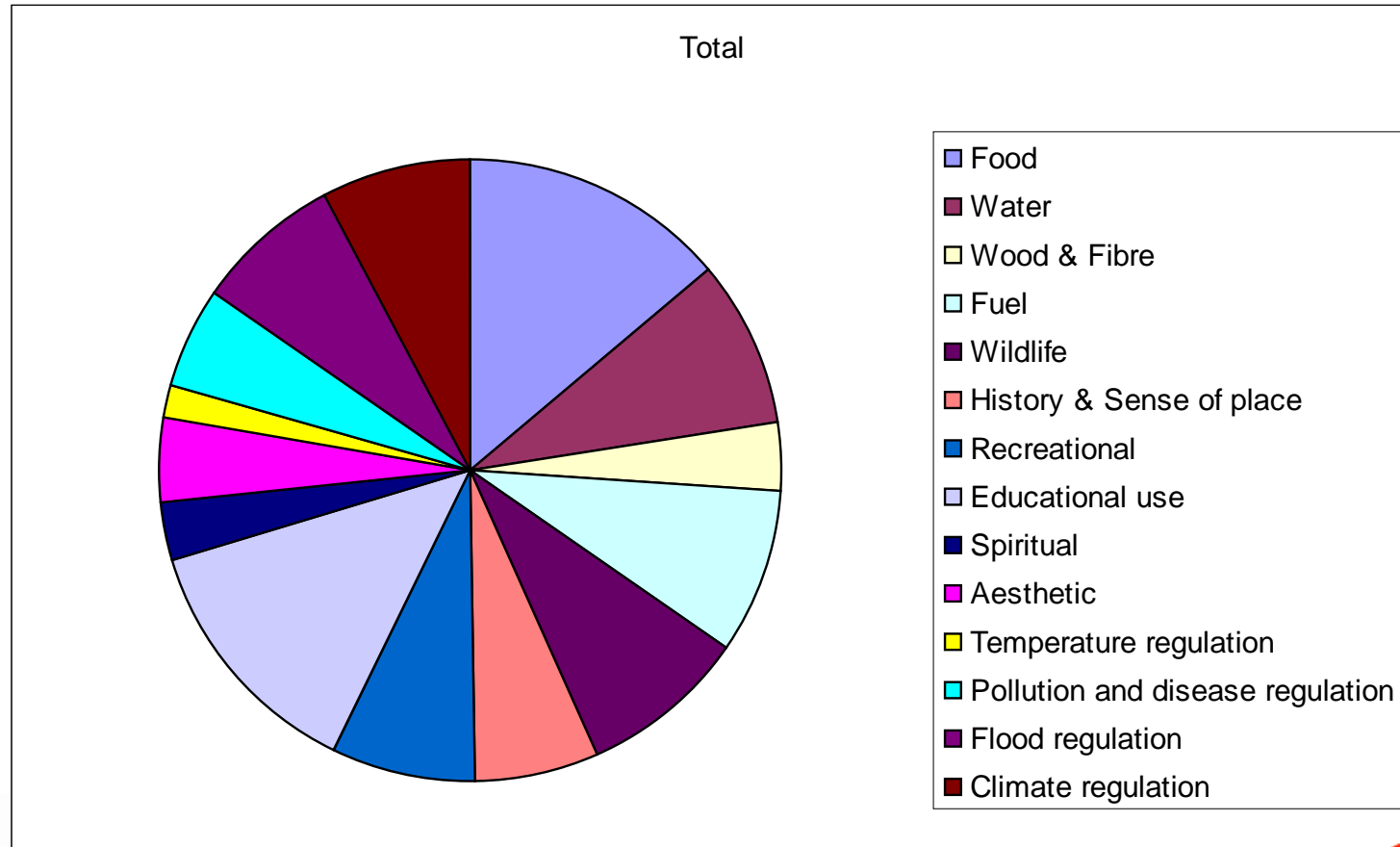
www.r4c.org.uk

How we value ecosystems



www.r4c.org.uk

Combined results



www.r4c.org.uk

Phase 1 – Results overview

Valuation

- **Food** ↑ - agriculturally dominated groups.
- **Recreation, culture, education, wildlife** ↑ – stalls
- **Education** ↑↑ - surprisingly (?)

NB not everyone will have understood the questions in the same way - trends are probably fair.

Continuing the conversation

- **Discussion** - altering values? - time scale; depth of discussion
- **More opportunity to discuss** - breadth not single issues

www.r4c.org.uk

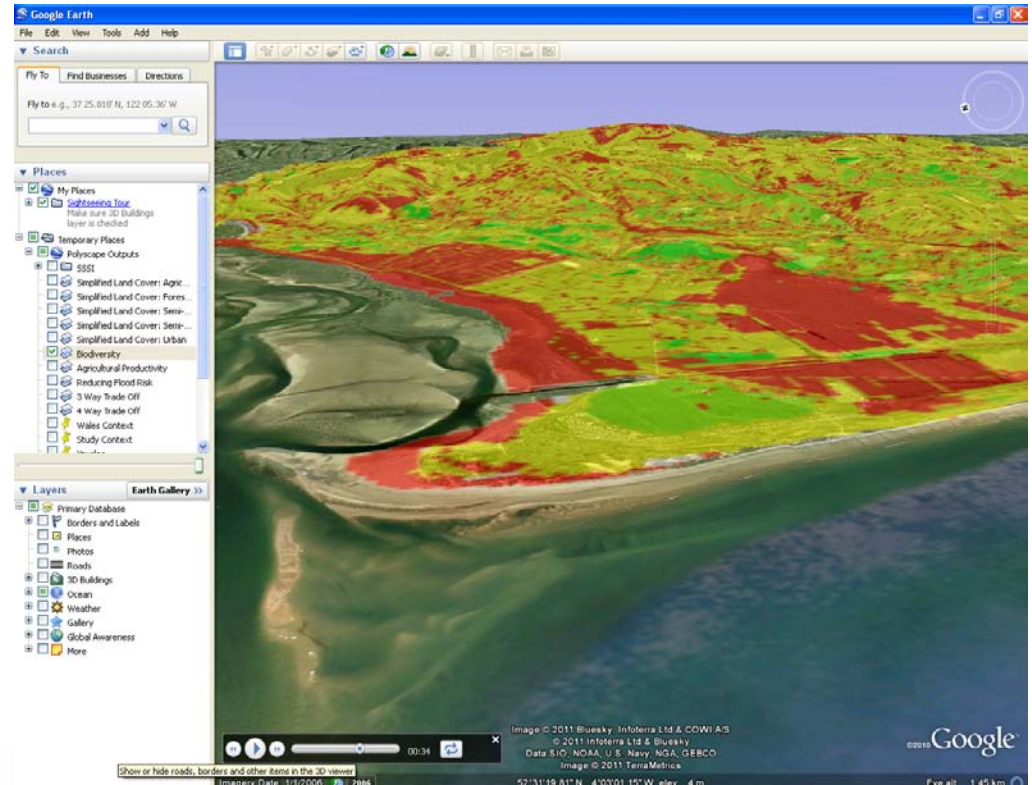


Cyngor Cefn Gwlad Cymru
Countryside Council for Wales

Dyfodol y Cambria - Planning for Change?

Second Phase – (informed by phase 1)

- Taking forward land use change conversations
- Do visualisation tools like Polyscape help?
- Policy, management and engagement implications



www.r4c.org.uk

Workshop 2 - results

Policy needs

- greater stakeholder debate.
- to set broad frameworks defining 'needs' or directives, local decision making to identify the best approach.
- Decision making (incl. policy formulation) - follow clear project cycle process → real engagement.

www.r4c.org.uk



2nd workshop results cont.

Management

- Land use mapping tools - eg Polyscape, support dialogue. Stakeholders should be involved in identification of overlays – eg economic.



Appropriate dialogue needs to work within natural areas, defined by social and geographic issues of relevance and scale to the area.

Second workshop results cont.

Engagement

- Stakeholders want more integrated and sophisticated conversations.
- Discussing land use and aspects of **change** was a good starting point for engagement.
- Times for dialogue are unrealistic and are too reliant on the time scales set by political terms.

www.r4c.org.uk



Cyngor Cefn Gwlad Cymru
Countryside Council for Wales

Overall – Key Messages

- Stakeholders - involved in more complex discussions
- Policy - fit time-frame based on dialogue and process.
 - discussions at local level - ‘ground truthed’.
 - create guiding frameworks,
 - local people - local solutions.
- Visualisation and interactive approaches – can be supportive to complex dialogue.



Overall – Key Messages cont.

Polyscape and process could support complex dialogue
e.g. Glastir, energy production.

Joined up dialogue / consultation

- smaller numbers involved in detailed discussions
- periodic outreach - street stalls - check direction of travel.

Consideration of wider stakeholder dialogue at farm scale.

www.r4c.org.uk



Cyngor Cefn Gwlad Cymru
Countryside Council for Wales

Follow Up

After 2nd workshop and during the process, activities progressed:

- Debrief to Elin Jones, Rural Affairs Minister for Wales.
- Debrief with the CCW internal team.
- Presentation of 1st stage to the Natural Capital Initiative workshop (Feb)
- This presentation to Defra, 17th March
- Debrief with the Menter groups (ongoing)
- Feedback to all participants

www.r4c.org.uk



Next steps?

- **Continue the dialogue** → trialling and scale↑
R4C - Local Observatory supported by wiki collated learning.
 - If successful, expand area, testing process, interlocking and overlapping dialogue - EU bid ?
 - Develop financial interactive method → more sophisticated tool for these types of discussions.
 - Trial alternative approaches - reverse auctions, locally administered grant pots.

www.r4c.org.uk

Next steps? Cont.

- Trial polyscape as a farm level planning tool.
- Consider polyscape as a discussion tool for complex issues – Glastir, energy, etc
- Cambrians - excellent area for continuing the development

www.r4c.org.uk



Cyngor Cefn Gwlad Cymru
Countryside Council for Wales