

Valuing our Life Support Systems

London 6th November 2014

Jo Pike

Project Director, World Forum on Natural Capital

@NatCapForum

www.naturalcapitalforum.com

#NatCap15



Where are we now?

@NatCapForum

www.naturalcapitalforum.com

#NatCap15

World Forum on Natural Capital

- 486 business leaders, NGOs, government representatives and academics
- 94 speakers
- From 35 countries
- Gathered in Edinburgh last November
- To help turn the debate on natural capital into action

Some challenges that were debated

- What are the likely trade-offs and how should these be managed?
- Is regulation desirable and/or necessary?
- How important are the numbers?
- How do you account for natural capital across borders?
- How do you identify the right tools for your business?
- What are the risks?

And some others that emerged

- Even specialists don't always share a common language
- Natural capital is seen as synonymous with sustainability by many of the 'usual suspects' and as nothing more than biodiversity offsetting by its detractors
- We need a collective vision

“I can sincerely say that the event had a big impact on me. I fully appreciate, now more than before, the importance of valuing nature and incorporating the Natural Capital trade-offs in our government and business decisions...Thank you again for an eye-opening and informative week. You have definitely have added one more foot-soldier to the cause.”

Monde Nkosi
One Young World

November 2015 aims:

- 1. Progress global action to protect and enhance natural capital, within an ethical framework, for the benefit of society, our economy and the natural environment**

November 2015 aims:

1. **Progress global action to protect and enhance natural capital, within an ethical framework, for the benefit of society, our economy and the natural environment**
2. **Demonstrate how profound change can only happen if business leaders, NGOs, governments and others collaborate**

November 2015 aims:

1. **Progress global action to protect and enhance natural capital, within an ethical framework, for the benefit of society, our economy and the natural environment**
2. **Demonstrate how profound change can only happen if business leaders, NGOs, governments and others collaborate**
3. **Contribute to international targets focused on reversing the damage we're doing to biodiversity and ecosystems**

World Forum on
Natural Capital
E D I N B U R G H · 2 0 1 5



The Natural Capital Charter

@NatCapForum

www.naturalcapitalforum.com

#NatCap15

An ethical framework

- Asking the difficult questions
- Tackling the risks
- Led by IUCN
- Consultation in 2015
- Launch at the World Forum on Natural Capital



Where are we now...

...in Scotland?

@NatCapForum

www.naturalcapitalforum.com

#NatCap15



Scottish Forum on Natural Capital

[HOME](#)[ABOUT](#)[WHO'S INVOLVED](#)[CONTACT](#)[REGISTER
FOR
UPDATES](#)

SCOTTISH FORUM LAUNCH

The Scottish Forum on Natural Capital, a groundbreaking new initiative, was launched at the inaugural World Forum on Natural Capital, in Edinburgh last November.

[Find out more](#)

Findhorn

[NEWS & BLOG](#)[TWITTER](#)[WHO'S INVOLVED](#)[CONTACT](#)

Natural Capital

REGISTER
UPDATE

FIRST MEMBERS SIGN UP

The first 25 members representing Private, Public and Voluntary organisations have signed-up to the vision of the Scottish Forum on Natural Capital

Find out more



Scottish Forum on Natural Capital First Members

NEWS & BLOG

GUEST BLOG: The Hidden Value of Trees - Assessing the non-market benefits

TWITTER

RT @SPIRAL_project: The need to measure not only ecosystem service flows but natural capital stocks:



WHO'S INVOLVED

The Scottish Forum brings together public, private and voluntary organisations

CONTACT

FOUNDING PARTNERS AND SUPPORTERS

Founding Partners

The Scottish Forum on Natural Capital's five founding partners are:



Supporters

We are very grateful to the Scottish Forum on Natural Capital's supporters for their contributions to our work.



WHO'S INVOLVED

[FOUNDING PARTNERS AND SUPPORTERS](#)[STEERING GROUP](#)[EXPERT ADVISORY PANEL](#)[MEMBERS](#)[WHY JOIN](#)

NEWS & BLOG

[Edinburgh sets natural capital example](#)[Business leaders believe urgent action is needed for Scotland's natural environment](#)[EVENT: Natural Capital: Getting from A to B](#)[ICAS \(Institute of Chartered Accountants of Scotland\) Farming, Estate Management and Renewable Energy Conference](#)[GUEST BLOG: How do you hold a sunbeam in your hand? Valuing the invaluable.](#)[More news](#)

50+ Members

- Alliance Trust
- Balfour Beatty plc
- BT Scotland
- Buccleuch
- Cairngorms National Park Authority
- Central Scotland Green Network (CSGN)
- Centre for Ecology & Hydrology
- CONFOR
- C-N-Do Scotland
- Edinburgh & Lothians Greenspace Trust
- Environmental Resources Management (ERM)
- GEO (Golf Environment Organisation)
- Grant Thornton
- Highlands and Islands Enterprise
- ICAS
- Institute of Chartered Foresters (ICF)
- Institute of Directors (IoD) Scotland
- James Hutton Institute
- Johnston Carmichael
- Lothian Buses
- Mainstreaming Innovation
- Natural Capital Ltd
- Ramblers Scotland
- Resource Efficient Scotland
- RBS
- Royal Botanic Garden Edinburgh
- RSPB Scotland
- Scotland's 2020 Climate Group
- Scotland's Rural College (SRUC)
- Scottish Environment LINK
- Scottish Government
- Scottish Land & Estates
- Scottish Natural Heritage
- Scottish Wildlife Trust
- SSE
- The Centre for Stewardship
- The Crown Estate
- The Hayfield Centre
- The National Trust for Scotland
- The University of Edinburgh
- Woodland Trust Scotland

@NatCapForum

www.naturalcapitalforum.com

#NatCap15

Our vision

- A Scotland in which all parts of society, including companies, NGOs, the Government, public bodies and communities, recognise our reliance on natural capital and the impact we have on it
- A Scotland in which an understanding of our relationship with natural capital leads to action to protect and rebuild it
- A Scotland which is exercising leadership to galvanise action both here and beyond Scotland's borders



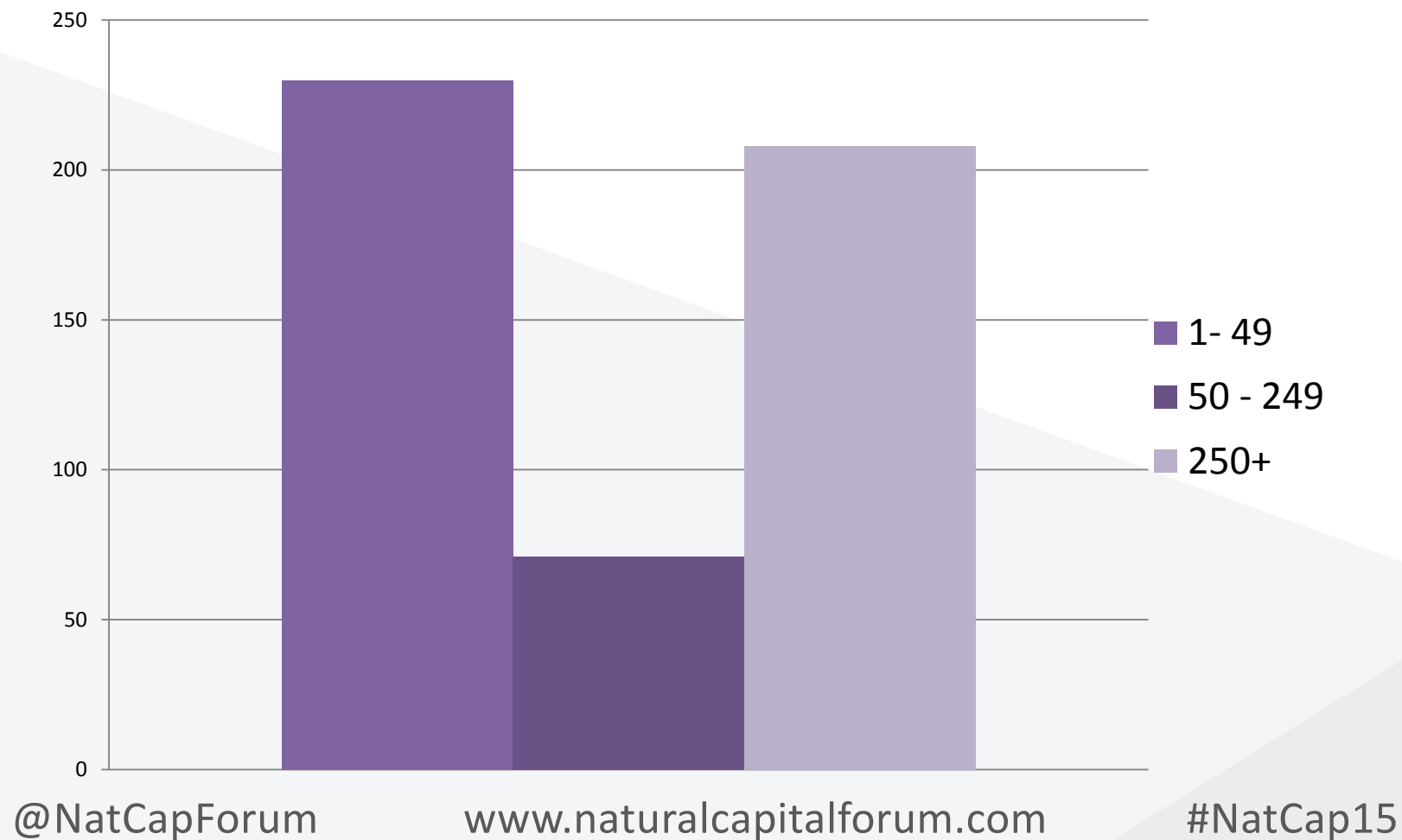
So what does the Scottish business community think about natural capital?

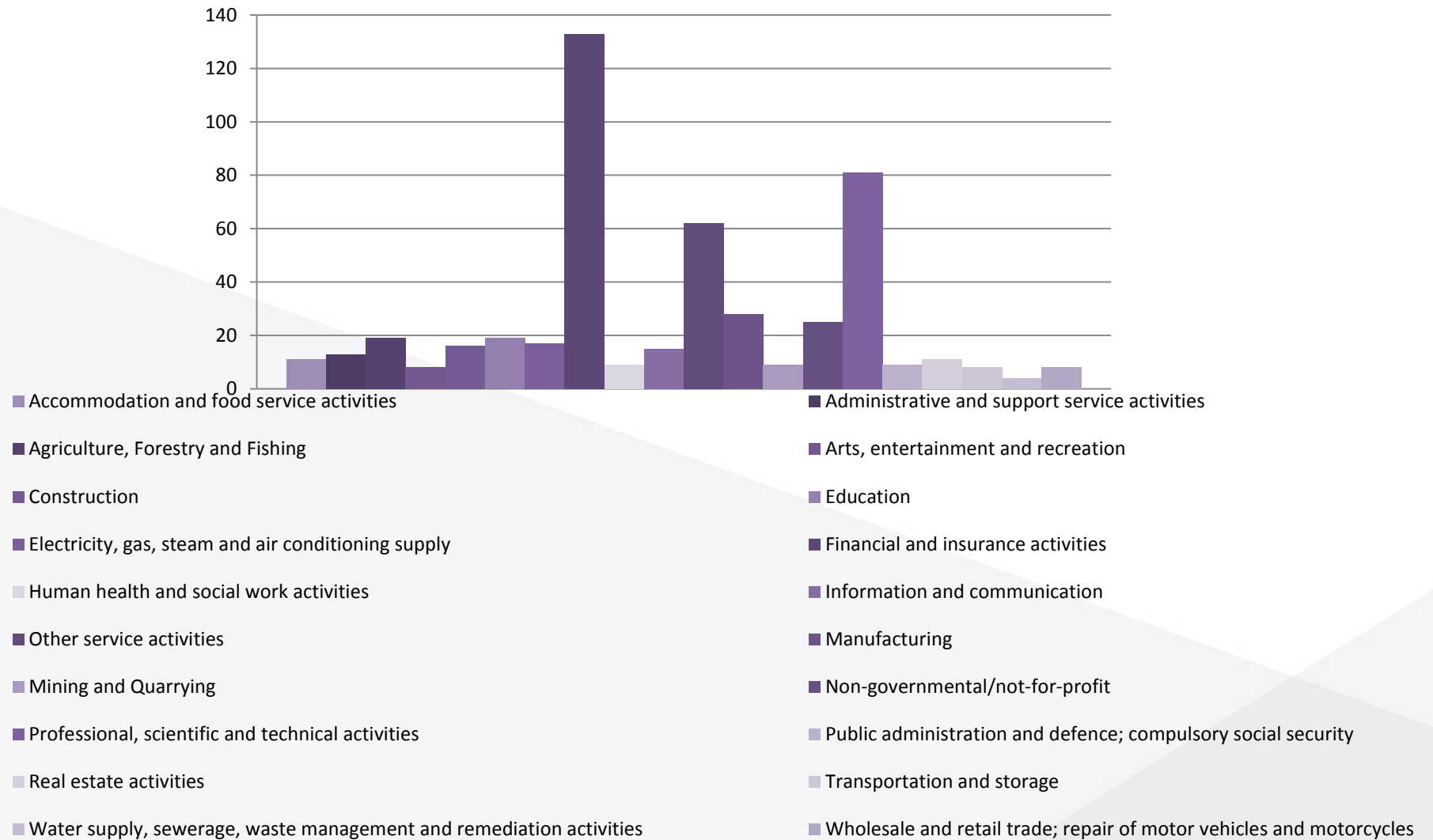
@NatCapForum

www.naturalcapitalforum.com

#NatCap15

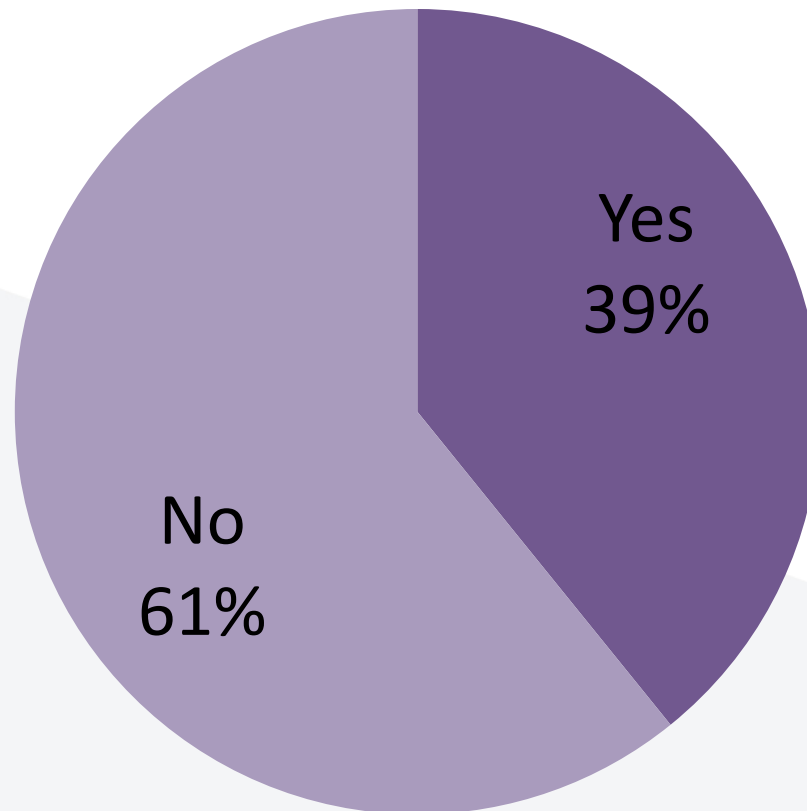
How many people does your organisation employ







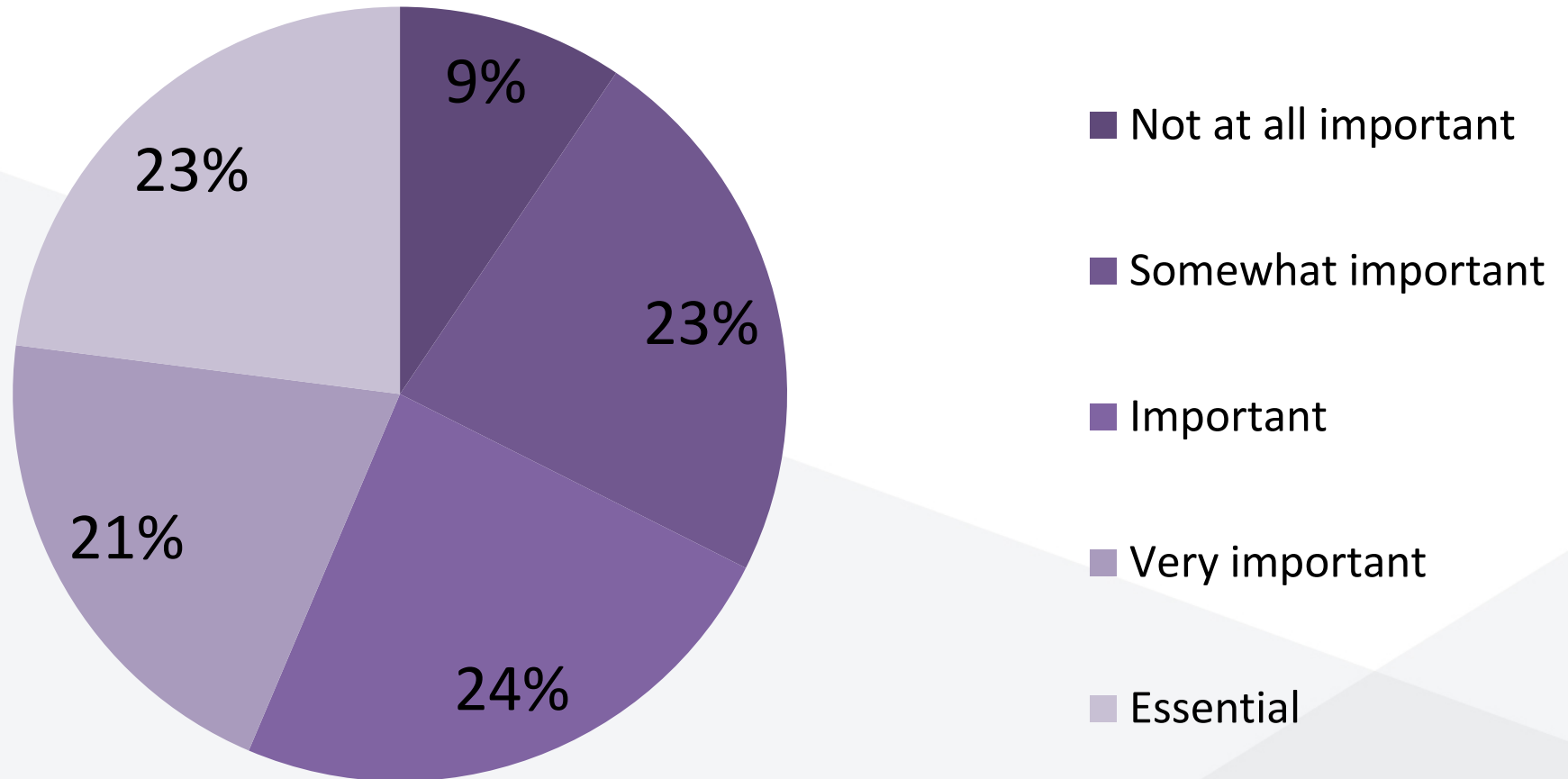
1. Before taking this survey, were you familiar with the term ‘natural capital’?



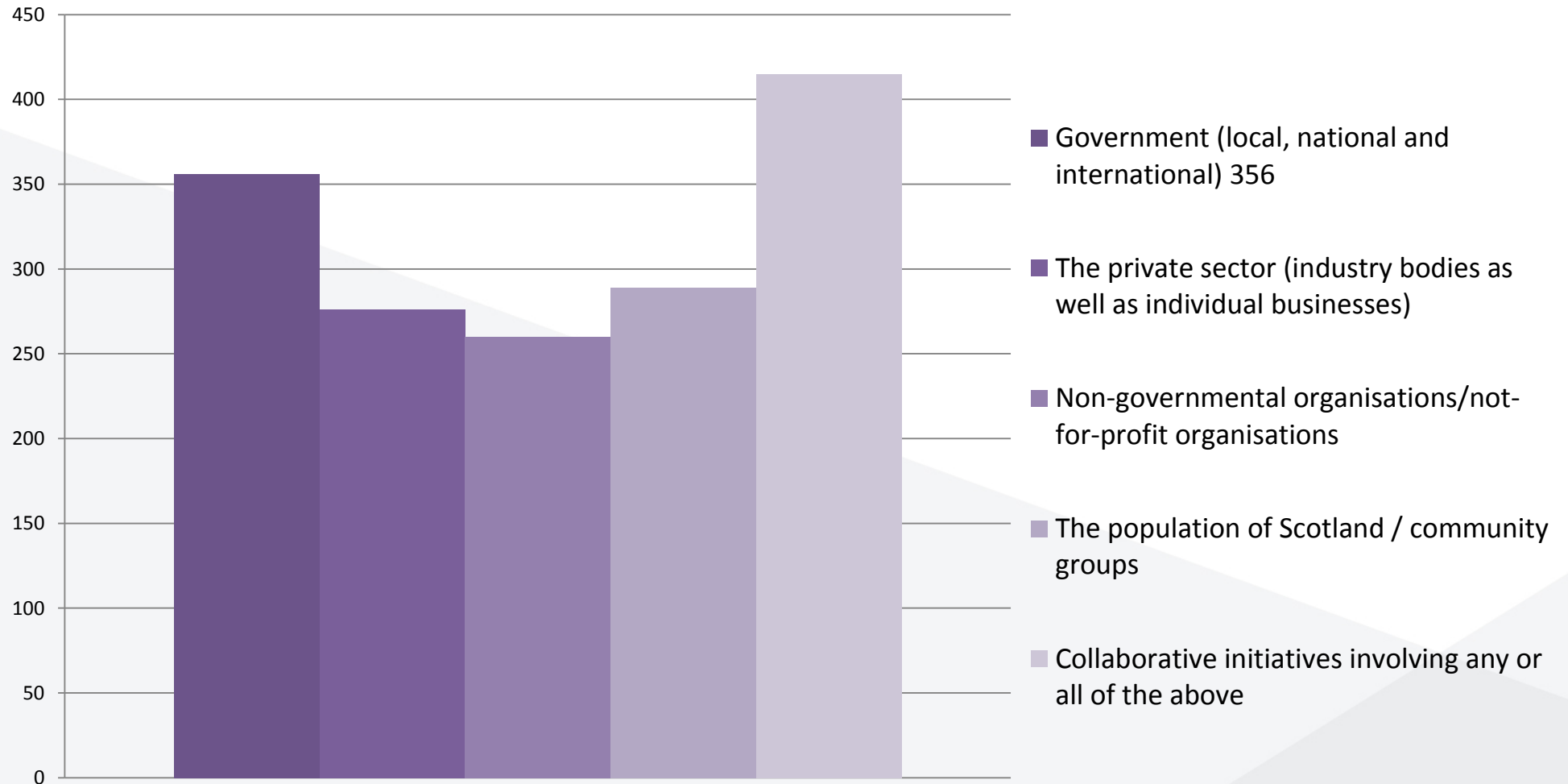
Natural Capital

The earth's stock of natural assets - including forests, rivers, land, minerals and oceans - that supply us with essential goods (such as food, medicine, fuel and building materials) and services (such as pollination, climate regulation and flood protection) on which all human life depends.

**2. How important do you think
Scotland's natural capital is to
your organisation, based on the
definition provided?**



3. In your view who is responsible for enhancing & protecting Scotland's natural capital?



@NatCapForum

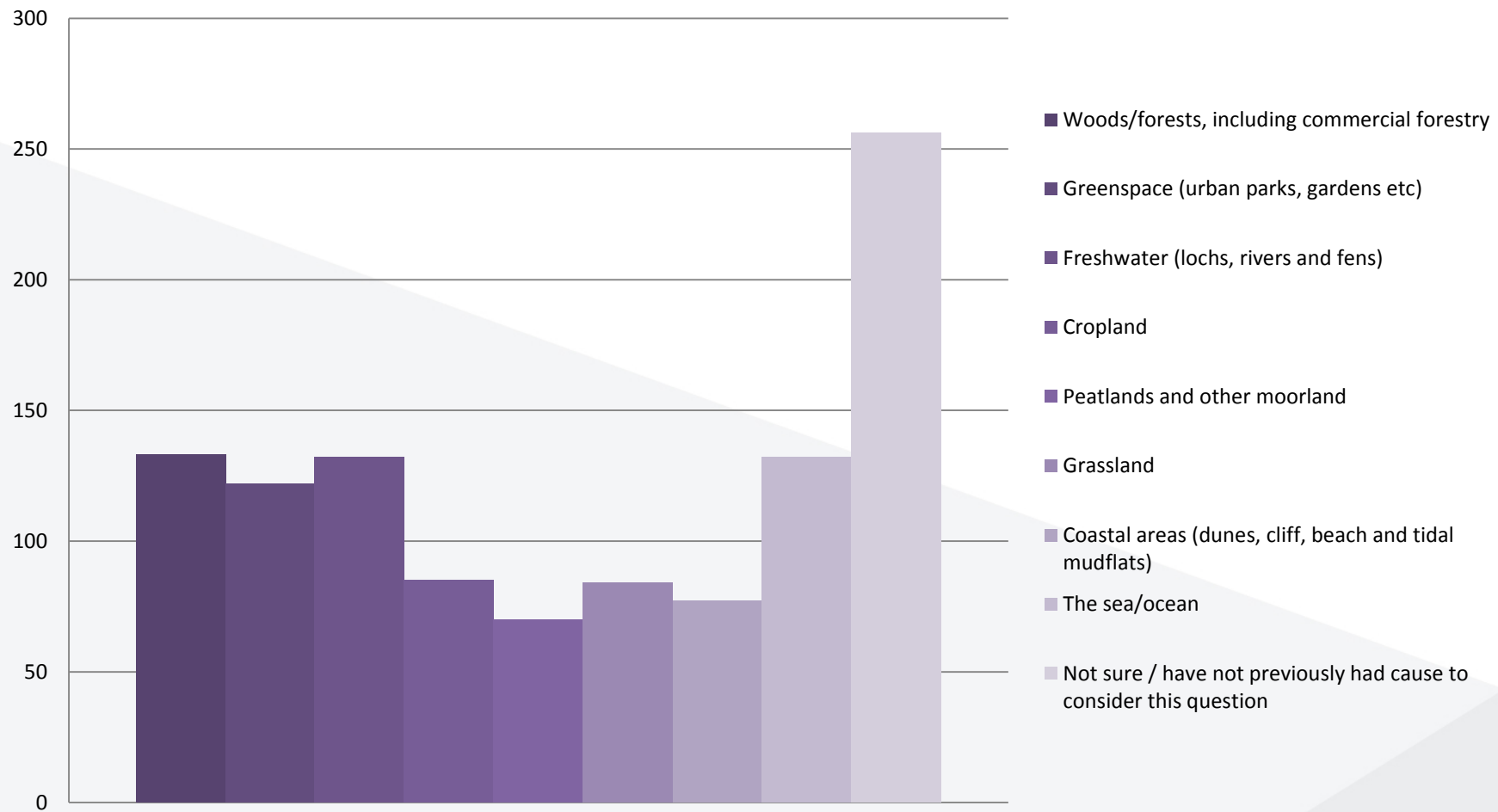
www.naturalcapitalforum.com

#NatCap15



4. Which of the below are relevant to your organisation?

- Woods/forests, including commercial forestry
- Greenspace (urban parks, gardens etc)
- Freshwater (lochs, rivers and fens)
- Cropland
- Peatlands and other moorland
- Grassland
- Coastal areas (dunes, cliff, beach and tidal mudflats)
- The sea/ocean
- Not sure / have not previously had cause to consider this question



@NatCapForum

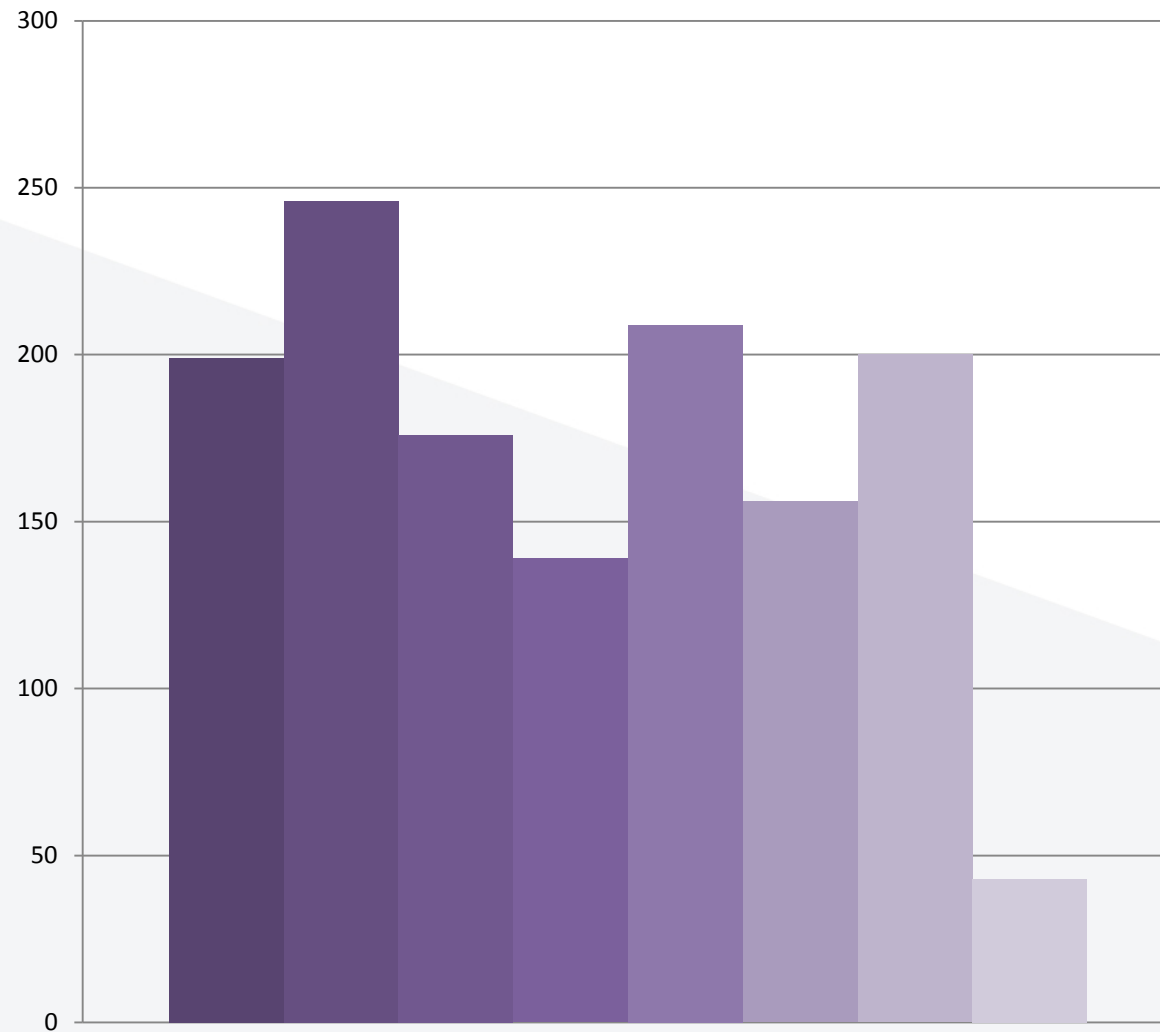
www.naturalcapitalforum.com

#NatCap15



**5. Which of the below sums up
your organisation's attitude in
relation to natural capital?**

- We would change if we saw business opportunities
- We would change if regulation meant we had to
- We would change in order to help address resource scarcity and/or help secure our supply chain
- We would change in order to avoid a potential loss of income
- We would change in response to consumer pressure and customer /client expectations
- We would change if we saw an opportunity to show leadership
- We would change in order to reduce or avoid costs
- Other (please specify)



- We would change if we saw business opportunities
- We would change if regulation meant we had to
- We would change in order to help address resource scarcity and/or help secure our supply chain
- We would change in order to avoid a potential loss of income
- We would change in response to consumer pressure and customer /client expectations
- We would change if we saw an opportunity to show leadership
- We would change in order to reduce or avoid costs
- Other (please specify):

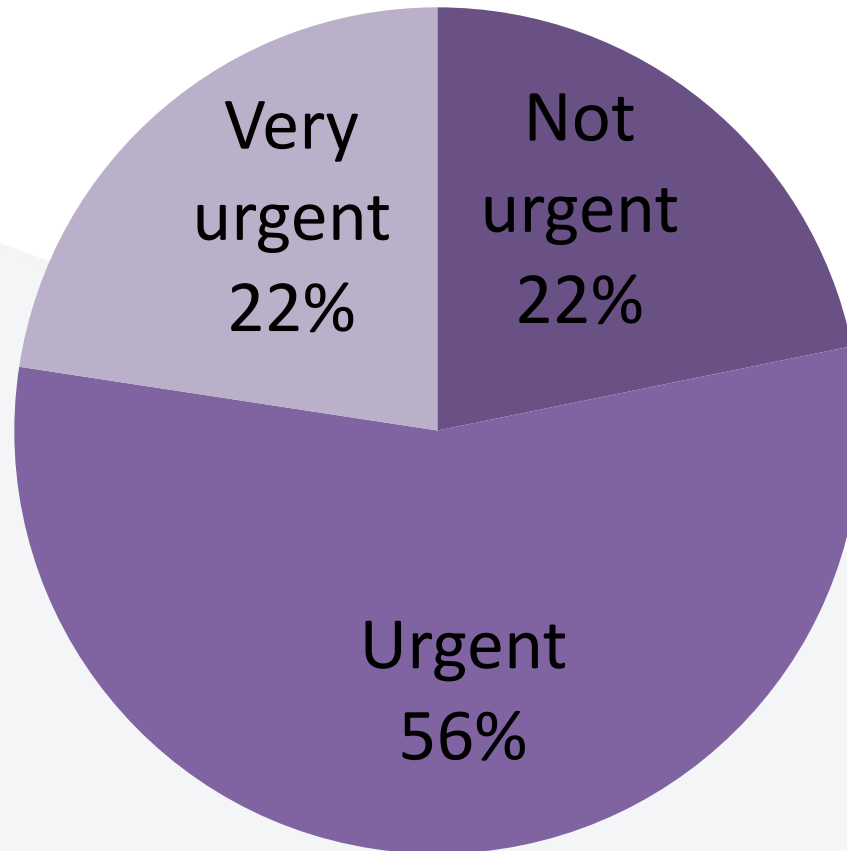
@NatCapForum

www.naturalcapitalforum.com

#NatCap15

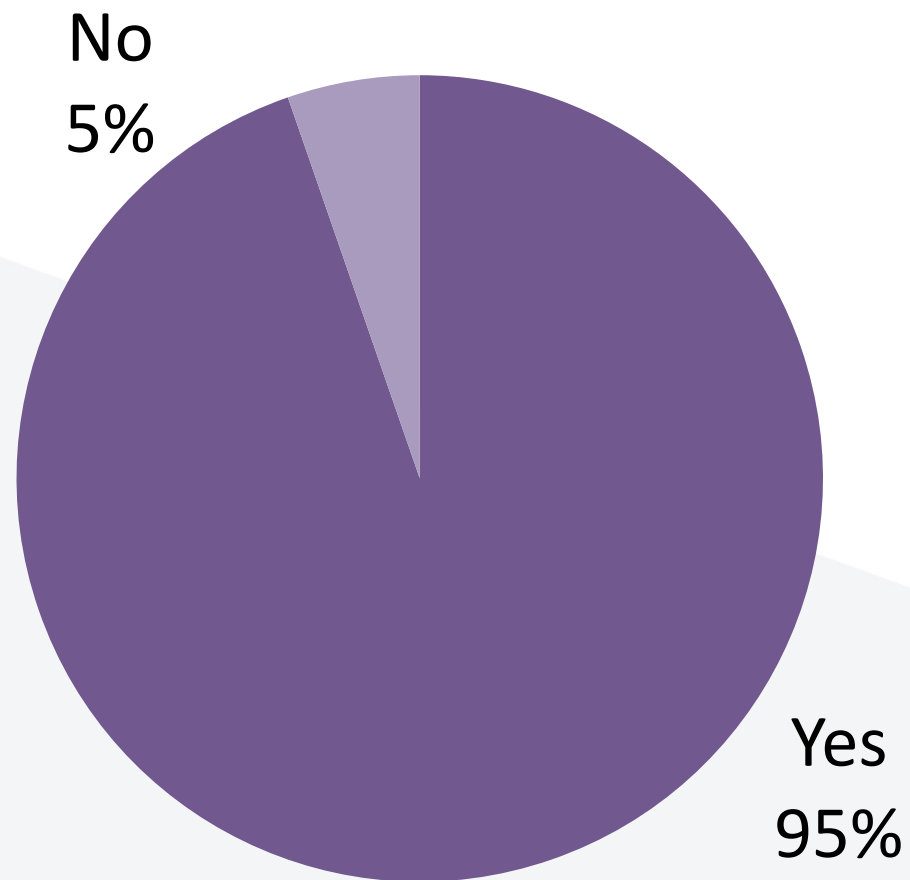


6. How urgent do you feel it is to take action to protect and enhance natural capital in Scotland?





7. Do you feel that a better understanding of our relationship with natural capital could contribute to better outcomes for business, society and the environment?



@NatCapForum

www.naturalcapitalforum.com

#NatCap15



Where are we now?

A personal perspective

@NatCapForum

www.naturalcapitalforum.com

#NatCap15



1. What?

@NatCapForum

www.naturalcapitalforum.com

#NatCap15



1. What?
2. Why?



1. What?
2. Why?
3. Who?



1. What?
2. Why?
3. Who?
4. How?



1. What?
2. Why?
3. Who?
4. How?
5. *How well?*



**What happens next will depend
on how *well* we collaborate**

World Forum on
Natural Capital
E D I N B U R G H · 2 0 1 5



Thank you

@NatCapForum

www.naturalcapitalforum.com

#NatCap15